



J3 Cushion

Effective January 2011

ACCOUNT #: _____ SHIP TO: _____
 DATE: _____ NAME: _____
 P.O. #: _____ ADDRESS: _____
 BUYER: _____ CITY/ STATE: _____
 MARKED FOR: _____ ZIP CODE: _____ PHONE #: _____

The HCPCS codes provided are based on code verification by the PDAC or our interpretation of the code definitions.
 Proper use of HCPCS codes does not ensure coverage or payment. For coverage information, verify the appropriate payer's coverage policy.

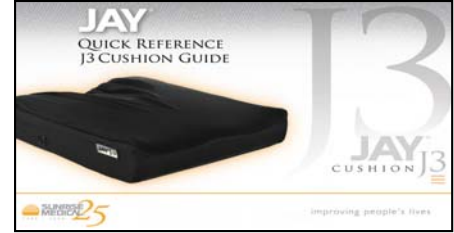
To order a J3 Cushion, a J3 SMART Part Number must be built. Follow the steps below to build your own unique Smart Part #.

Example

J3C S 1816 B FF S P

J3 CUSHION STEP 1 STEP 2 STEP 3 STEP 4 STEP 5 STEP 6

Selected Component



For additional information, please refer to the J3 Cushion Quick Reference Guide. Part # 111903.

J3 CUSHION BASE

Select	Part #	Charge
<input type="checkbox"/>	J3C	\$440

J3C
J3C

STEP 1

CUSHION HEIGHT

Select	Part #	Upcharge
<input type="checkbox"/>	S	-
<input type="checkbox"/>	D	ADD \$30

Standard (3.75" unloaded state)
 Deep (4.25" unloaded state)

Deep height designed for maximum immersion for a higher risk user with lower mass & tissue integrity

S or D

STEP 2

CUSHION WIDTH

Select	Part #	Upcharge
<input type="checkbox"/>	Select box to the right	-
<input type="checkbox"/>		Add \$85

Standard (12"-21")
 Heavy Duty Cushion (22"-24") [E2623 for 22" wide and greater]

*See Figure 1-1 for available sizes

CUSHION DEPTH

Select	Part #	Upcharge
<input type="checkbox"/>	Select box to the right	-
<input type="checkbox"/>		-

Standard (12"-21")
 Heavy Duty Cushion (22"-24")

*See Figure 1-1 for available sizes

Figure 1-1

		WIDTH											
Size Matrix		12"	14"	15"	16"	17"	18"	19"	20"	21"	22"	23"	24"
DEPTH	12"	S	S										
	14"	S											
	15"	S											
	16"	S											
	17"	S											
	18"	S											
	19"	S											
	20"	S											
	21"	S											
	22"	S											
24"													
Std PLA		A			B (A available)						C (A&B available)		
		Standard Size		Special Order		N/A		S		Available in Std. Ht Only			

STEP 3 (Optional Step - Only use this section when selecting a non standard PLA size)

PELVIC LOADING AREA (PLA) SIZE

Select	Part #	Upcharge
<input type="checkbox"/>	A	-
<input type="checkbox"/>	B	-
<input type="checkbox"/>	C	-

A - Small (Standard with 12" - 15" widths*)
 B - Medium (Standard with 16" - 19" widths*)
 C - Large (Standard with 20" - 24" widths*)

A, B, or C

*PLA size has been optimized based upon anthropometric studies relative to cushion width.
 Please note the following: 12" width not available in deep profile

STEP 4

PELVIC LOADING AREA (PLA) INSERT

Select	Part #	Upcharge
<input type="checkbox"/>	FF	-
<input type="checkbox"/>	FV	ADD \$10

*Field Variable Option comes standard with the following supplement pads included:

PLA A = (2) Medium PLA B = (2) Large PLA C = (2) X-large

<input type="checkbox"/>	AS	ADD \$55
<input type="checkbox"/>	AD	ADD \$60

Air Bladder Options ship with instructions, air pump, patch kit and nozzle fittings



FF, FV, AS or AD



Factory Filled (FF)



Field Variable (FV)



Air Single Valve (AS)



Air Dual Valve (AD)

STEP 5

COVER OPTION

Select	Part #	Upcharge
<input type="checkbox"/>	S	-
<input type="checkbox"/>	I	-
<input type="checkbox"/>	M	-



S, I, or M

STEP 6 (Optional Step)

POSITIONING COMPONENTS

<input type="checkbox"/>	P	ADD \$20
--------------------------	---	----------

Ships with two lateral thigh pieces as standard

Positioning Components (Use Code E2622/E2623) -OR-

Order Individual components using configurator
Do Not enter "P" in the SMART part number

<input type="checkbox"/>	2" Lateral Pelvis (pair) (Use K0108)	ADD \$20
<input type="checkbox"/>	2" Medial Thigh (Single) (Use K0108)	ADD \$20
<input type="checkbox"/>	2" Lateral Thigh (Pair) (Use K0108)	ADD \$20

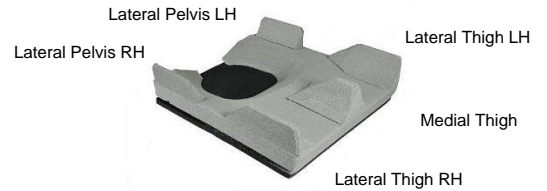


P (optional)

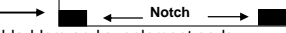
Not shown but available through Sun Parts Online:

"Pelvic Obliquity Pads" - example part # J3CDCOL

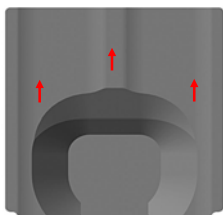
Figure 2-3



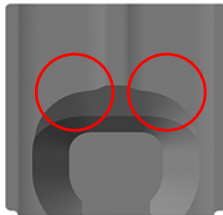
OPTIONAL MODIFICATIONS - Please contact customer service to discuss your modification options. Some MODS may prevent the use of the reducer rings and/or positioning pieces

Modification	Description	Up charge	CODE
Change PLA Size	PLA size different than Step 3. Includes a custom cover to match PLA size. (available A=12"-24", B=14"-24", C=16"-24" (S) or (D))	NC	(IPLAS)
Change PLA Location	Move PLA location. PLA Size remains the same. Available to move up to 4" forward, 1" left or right in 1" increments	NC	(CPLAL)
Femoral Relief	Front of PLA is additionally cutaway to decrease the slope angle from the PLA to the femoral support area	NC	(FTR)
Scrotal Relief	Front and center of PLA is "scooped" out to accommodate organ tissue.	NC	(SR)
Trochanteric Relief	Base material removed to create less pressure at or near the trochanters	NC	(TR)
Positioning Pieces	Include Positioning pieces with cushion but DO NOT INSTALL. Allows for custom installation in the field using heating instructions	NC	(DNIP)
Notch for Rails	Notch foam base to lower cushion between the seat rails. See cross section diagram 	NC	(NR)
Fluid Volume Changes	Remove or add fluid to the entire bladder to achieve ideal immersion. Also possible with FV bladders and supplement pads	NC	(UF or OF)
Leg Trough Cut	For improved positioning, use this modification to increase the depth ~1" of the femoral trough to support the femurs.	NC	(LTC)
Embroidery	Add personalization for identification purposes. (Hint: Great for large facilities or product identification during cleaning)	NC	

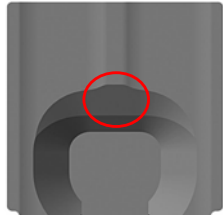
MODIFICATION Diagrams. The red circles DO NOT represent the actual shape of the cutouts. The affected areas will result in smooth transitions and subtle changes that assist in the lessening of pressure in specific areas of the cushion base. These red circles only highlight the area of the base that the MOD will affect



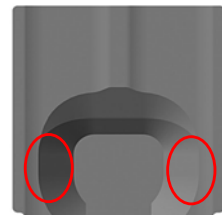
Move PLA Location



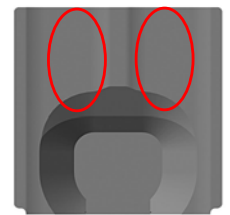
Femoral Relief



Scrotal Relief



Trochanteric Relief



Leg Trough Cut

* Multiple combinations of these MODS are possible. Common example is Femoral Transition and Scrotal. Please contact customer service for combinations

* If there is a modification that is not listed above, contact customer service and we will do our best to accommodate your needs.

J3 SMART PART #

J3C						
-----	--	--	--	--	--	--

POSITIONING COMPONENTS
(If applicable)

PRICE

NOTES



Ordering Information PHONE (800) 333-4000, Fax (800) 300-7502, WEB: www.sunrisemedical.com